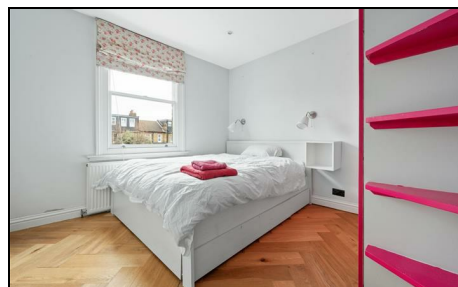


Hamilton Road Wimbledon, SW19 1JG

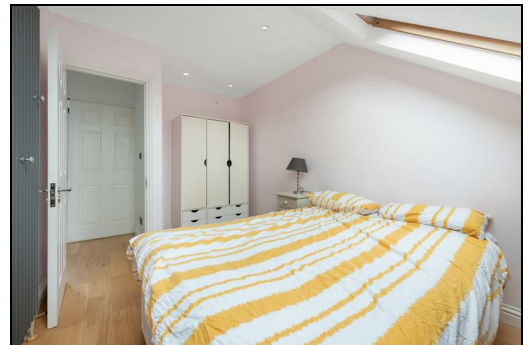
£650,000 Leasehold



A lovely, three bedroom, two bathroom, split-level Victorian flat, located within the highly sought after Battles area, being within easy reach of both Northern Line and mainline stations, Wimbledon town centre and excellent local schools. On the first floor you are welcomed by a fantastic bright space with wood flooring giving you open plan kitchen/dining/living areas to enjoy as well as a separate bedroom/reception and bathroom. Additionally there are two further bedrooms and a bathroom in the converted loft, there is also the benefit of share of freehold, and as flats of this size are rare in this area an early viewing is recommended.

Hamilton Road, SW19

Approximate Gross Internal Area = 84.4 sq m / 908 sq ft



This floor plan is for representation purposes only and is not drawn to scale.
The Gross Internal Area includes outbuildings shown on the plan.
 Whilst every attempt has been made to ensure the accuracy of the plan measurements of doors, windows and rooms are approximate only and should be checked before making any decisions reliant upon them.
 Copyright Bespokeplans.co.uk (ID588427)

- Sought After Road in Battles
- Bright and Airy
- Fantastic Living Space
- Three Bedrooms
- Two Bathrooms
- Close to Excellent Schools
- Share of Freehold
- Service Charge - 50/50 split Ad hoc
- EPC Rating C
- Council Tax Band D

Energy Efficiency Rating		Current	Potential
Very energy efficient - lower running costs			
(92-100) A			
(81-91) B			
(69-80) C			
(55-68) D			
(39-54) E			
(21-38) F			
(1-20) G			
Not energy efficient - higher running costs			
England & Wales		73	78
EU Directive 2002/91/EC			

For Free Mortgage Quote and Best Mortgage Rates, call an Ellisons Mortgage Advisor on 020 8944 9494



Although these particulars are believed to be correct, their accuracy is not guaranteed and they do not form part of any contract.

Celebrating 30 years of successful Sales and Lettings in Merton

